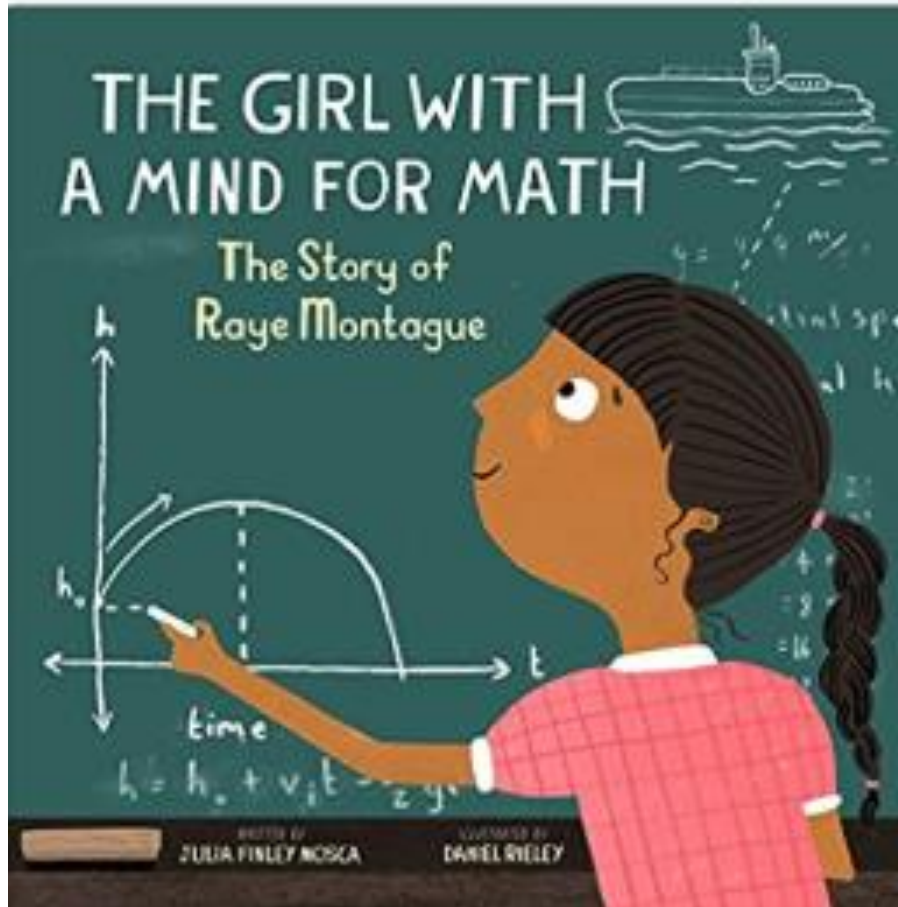


CLOSE Reading is FUN-but-MENTAL

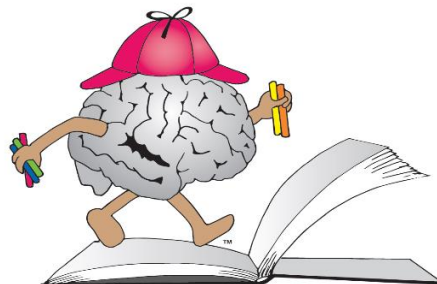


Grade Three

The Girl With a Mind for Math:

The Story of Raye Montague

Name: _____ Date: _____



Beryl Irene Bailey, Ed.D., CCC/SLP

Name: _____

Date: _____

The Girl with a Mind for Math-The Story of Ray Montague

Vocabulary in Context



Quincy Question

Directions: Read the following questions and circle the letter of the meaning of the **bold underlined word or phrase** as used in the stanza. **Practice** using your READ Strategy to help you to figure out the meanings of the words in context.

“A real submarine!” **Her eyes opened wide**

1. The author used the **bold** and **underlined phrase** to show that Raye was _____.
- a) afraid
 - b) amazed
 - c) concerned
 - d) surprised

“There will always be people who **pay you no mind**-just because you're a girl, and because you are black. Don't let them or the **state** of your SCHOOL, hold you back.”

2. The phrase, **pay you no mind**, most nearly means _____.
- a) Won't give you a chance to achieve.
 - b) Will just let you dream.
 - c) Won't give you a job.
 - d) Will ignore you.
3. The word **state** in this stanza most nearly means _____.
- a) condition
 - b) description
 - c) location
 - d) oration

“When the time came for COLLEGE, she knew what to choose. She’d learn to build BOATS! But she got some bad news... “Engineering’s not taught to black students” they said. **Her heart hit the floor.** “I’ll take BUSINESS instead.”

4. The author used the idiom, **“Her heart hit the floor”** to show that Raye was
- a) disappointed
 - b) discouraged
 - c) disgusted
 - d) distrustful

The narrator stated that Raye had **GRIT.** Grit means to be brave, have courage, and to not give up.

5. **Circle** the statement that shows the reader that Raye had **GRIT.**
- a) When the time came for COLLEGE, she knew what to choose.
 - b) Their rules were unjust, but that school wouldn’t break her.
 - c) She’d learn what she could, and she’d learn the rest later.
 - d) She said her farewells (There was not time to party).

The PRESIDENT ordered a SHIP: “Make it GRAND-and QUICKLY,” he added. Well that didn’t fly. All those plans would take engineers MONTHS to supply. Here’s the thing about that: when designing a boat, there are thousands of MEASUREMENTS one needs to **note.**

6. The word **note** in this stanza most nearly means _____.
- a) read
 - b) study
 - c) understand
 - d) write

She took a deep breath... “I can solve this ,” she said. “I’ve come up with a SYSTEM to do it instead. “It’ll draw the plans FASTER,” she told them. “Don’t **fret.** I’LL DESIGN THE FIRST SHIP BY COMPUTER! No sweat.”

7. The word **fret** in this stanza most nearly means _____.
- a) be gloomy
 - b) be happy
 - c) be shocked
 - d) be worried

Her program-it WORKED! All the blueprints were done. The ship was constructed. The engineers? **STUNNED**.

8. The word **STUNNED** in this stanza most nearly means _____.
- a) gloomy
 - b) happy
 - c) shocked
 - d) worried

“When Raye’s ship was unveiled, only white men could go. And Raye’s invite?! NOT mailed....No invite?! **ABHORRIBLE!** In fact, some might say it was downright DEPLORABLE.

9. The word **ABHORRIBLE** in this stanza most nearly means _____.
- a) bad
 - b) disgusting
 - c) unfortunate
 - d) unnecessary

Yet Raye kept her cool-gave her best every day, and in time all her SKILLS were **applauded**. HOORAY!

10. The word **applauded** in this stanza most nearly means _____.
- a) appreciated
 - b) ignored
 - c) recognized
 - d) used

More honors would follow. Her fame picked up steam. And finally, at last, she accomplished her DREAM. That title she’d worked for-an ENGINEER! SCORRRE!!! Now the world knows her **FEATS**. She is hidden no more.

11. The word **FEATS** in this stanza most nearly means _____.
- a) achievements
 - b) dreams
 - c) failures
 - d) wishes

Name: _____

Date: _____

The Girl with a Mind for Math-The Story of Ray Montague

Literal and Non-Literal Meanings

Directions: Read each statement and draw a sketch of what the words actually mean. Then infer what the author is trying to communicate to the reader.

Idiom	Literal Sketch	Intended Meaning
She was gifted in math and read books by the shelf.		
Her heart hit the floor.		
Their rules were unjust, but that school wouldn't break her.		
Then her BIG BREAK arrived -the whole staff got the flu. Raye did all of her work and the engineers' too!		
Many people, like him tried to make her feel small. Raye just held her head high and she outworked them all.		

Name: _____

Date: _____

The Girl with a Mind for Math-The Story of Ray Montague

Key Ideas & Details

Directions: Read and answer the questions about Raye Montague. Highlight the key details from the text that helped you to answer the questions in orange. Outline the key details from the illustrations in green. When writing the answers to the constructed response questions, answer in complete sentences.

In a state we call ARKANSAS, one winter day, a baby was welcomed-a GIRL they called RAYE.

1. **Determine** in which month Raye Montague was probably born.

- a) April
- b) January
- c) July
- d) September

Then something she'd cherish-when Raye was just seven, he took her to see her first SHIP. It was heaven. "A real SUBMARINE!" Her eyes opened wide. "Who made it?" she asked, as they followed the guide.

2. **Explain** how the author used punctuation marks and language to show how Raye behaved when she first saw the submarine.

3. Identify at least four details from the narrative poem that the author writes to show the reader that during the time-frame of the 1940's -1980's women and African-Americans did not have the same rights as white men.

The author writes, "I'm off to a place filled with HISTORY's greats-the CAPITAL CITY of all fifty states!"

4. Identify which city Raye is moving to.

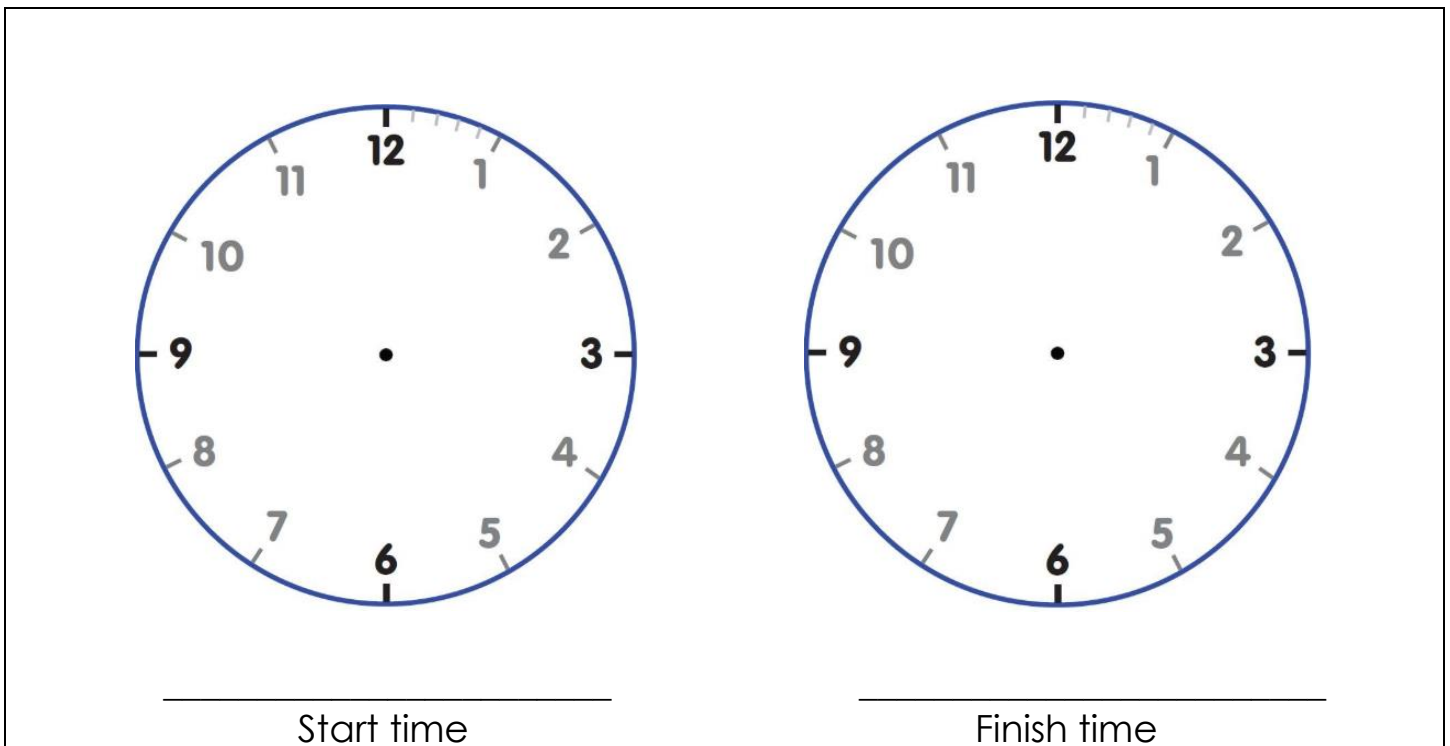
- a) Boston
- b) Hartford
- c) New York
- d) Washington, D.C.

The author writes, "How long do you think that might take? What's your guess? Would it take her a month? Maybe weeks for success? Well, it took CALCULATIONS (and tons of caffeine), but Raye finished in HOURS....just over EIGHTEEN!"

5. If Raye Montague started working on the engineering designs at 10:00 a.m., what time did she complete the blueprints for the submarine?

- a) Between 2:00 a.m.-3:00 a.m.
- b) Between 2:00 p.m.-3:00 p.m.
- c) Between 4:00 a.m.-5:00 a.m.
- d) Between 4:00 p.m.-5:00 p.m.

6. Show how you solved the problem.



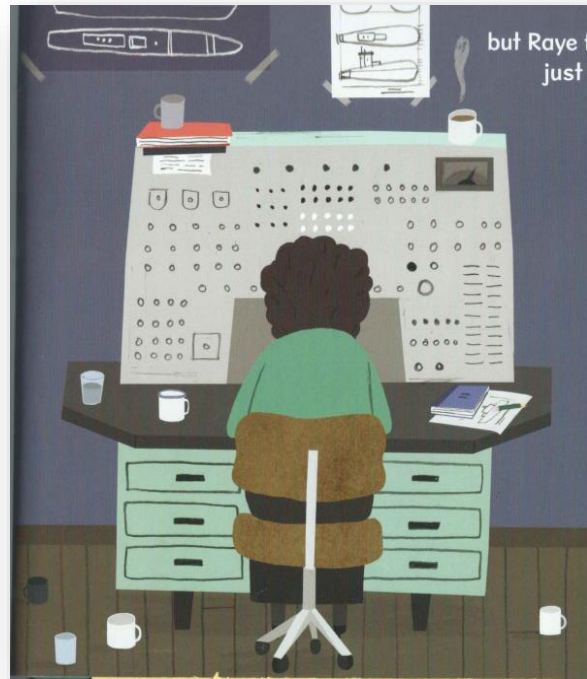
Name: _____

Date: _____

The Girl with a Mind for Math-The Story of Raye Montague

Book and Text Features

Directions: Conduct a CLOSE read of the pictures below and answer the questions that follow.



7. Determine how many cups of coffee Raye Montague drank while developing the plans for the submarine.

- a) 9
- b) 10
- c) 12
- d) 13

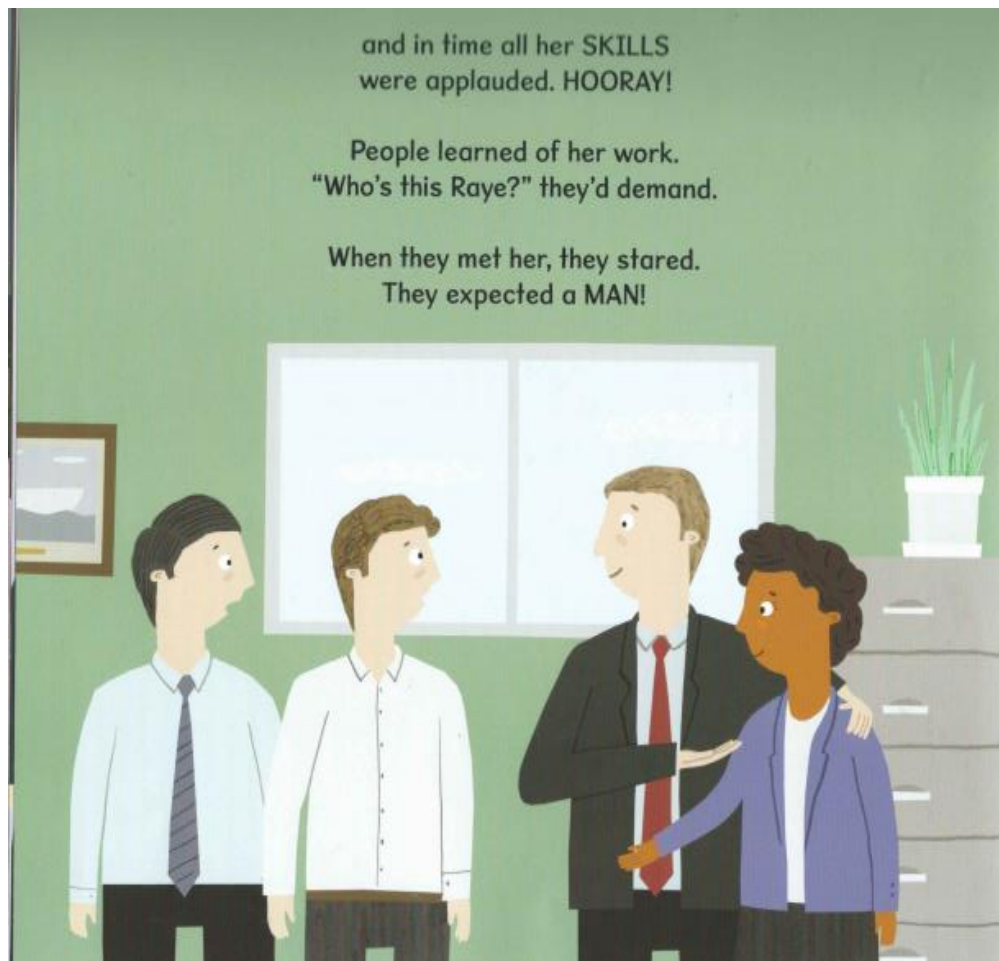
8. Explain how you determined your answer.

9. How does the illustrator show the reader that one of the cups of coffee is still hot?



10. How does the illustrator show the reader that the unveiling of the submarine was an important event?

11. How does the illustrator show the reader that there is a great distance between the submarine, the white men and Raye Montague during the unveiling of the ship?



Name: _____

Date: _____

The Girl with a Mind for Math-The Story of Ray Montague

Character Traits-Show, Don't Tell!

Some speakers, authors, and illustrators use the technique of **Show, Don't Tell**. This method helps the reader to experience the writers' and artists' stories and pictures through what the characters do, say, think, experience and feel rather than by an explanation or summarization of what is happening. With the Show, Don't Tell method, the author might describe the scene so the reader can make an inference about what is happening. Often-times the information provided is supported by the pictures drawn by the illustrator.

Directions: Through-out the Narrative Poem about Raye Montague, the author uses the **Show, Don't Tell method** to provide the readers with information about Raye. Read the statements about Raye's character traits on the left and write the letter of the matching description from the right, on the line provided.

Character Traits	Descriptions of Raye's behaviors
1. Raye believes she can make a difference. <u>C</u>	a. Her boss treated her poorly because of her race. Many people, like him, tried to make her feel small. Raye just held her head high, and she OUTWORKED them all.
2. Raye is not afraid to try something new. ____	b. Yet Raye kept her cool-gave her best every day, and in time all her SKILLS were applauded, HOORAY!
3. Raye is proud of her cultural heritage. ____	c. She took a deep breath... " I can solve this," she said."I've come up with a SYSTEM to do it instead. It'll draw the plans FASTER ," she told them, "Don't fret. I'LL DESIGN THE FIRST SHIP BY COMPUTER! No sweat."
4. Raye has confidence in herself. ____	d. When the time came for COLLEGE , she knew what to choose.
5. Raye demonstrates traits of persistence, diligence, and discipline. ____	e. So, she watched as they worked, and she learned every task, even studied COMPUTER by night in a class.